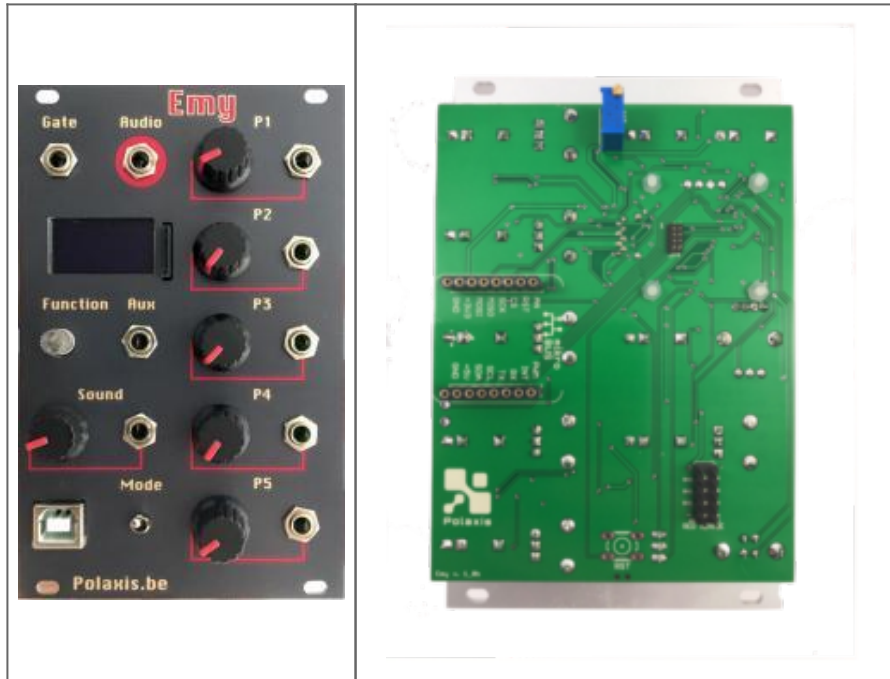


# Emy, the multi-voice Eurorack speech synthesizer

Emy, the Extensible Modular Yabblers



Emy is a versatile speech synthesizer that can host a hardware synthesizer on its back via the use of a mikroBUS port. This will allow transforming Emy in a matter of a minute. ([See add-on voxes](#))

Emy is flashed with software that emulates the famous TMS5220/TMS5100 speech chips.

Every aspect of the speech engine can be tweaked to alter the sound.

- LPC data are read from the SD card so an infinite vocabulary can be loaded
- Sound and vocabulary can be produced by concatenating allophones and prosody markers from the text file to affect rate, duration, and pitch. No limits here!

- The OLED crisp display allows browsing amongst the files and the lines within files to pick the sound the user wants to generate.
- Speech rendering can be tweaked in real-time to affect, rate, stretch, bend, pitch, and energy.
- All the potentiometers have CV entries attached to them
- Emy produces sounds in 3 major modes: Speech, Repeat, and VCO.
- In Speech mode, the speech starts with a gate signal and is completed before waiting for a new gate signal. The speech has priority.
- In Repeat mode, the speech starts and stops with the gate signal going high or low. The gate has the priority and the speech repeats while the gate is high. This mode is very useful to create crazy rhythms.
- In VCO mode, the LPC engine loops while the gate is high, producing steady notes.
- The firmware can be updated via the onboard USB port or via the SD card.

## Technical Details

- 16 hp
- micro SD card reader
- Diode for reverse polarity protection on power lines
- Consumption : +12V 60mA / -12V 18 mA
- Cortex-M0 ARM processor
- All inputs: 100k impedance, 12-bit ADC.
- CV control designed for 0-5 V entries
- aux out signal 5V
- OLED display
- mikroBUS host
- Output level 8 Vpp
- A USB port for communication, firmware updates, and USB keyboard text entry

# Firmwares



[Emy MIDI Serial](#) 95.37 KB 53617 downloads

This firmware works both on Emy 2018 and 2019 editions. It allows Emy to behave like...

[Download](#)



[Emy MIDI USB](#) 79.49 KB 53091 downloads

This firmware works both on Emy 2018 and 2019 editions. It allows Emy to behave like...

[Download](#)



[Emy Firmware](#) 65.95 KB 100171 downloads

This firmware is designed for Emy 2019 edition (PCB revision 1.0c). It can run on...

[Download](#)



[Emy QC](#) 85.59 KB 100512 downloads

Use this firmware to check Emy after assembly (SD upload compatible) Refer to the...

[Download](#)

# SD card

(if you need to get started with a new sd card)



[Emy SD card image](#) 32.99 KB 7128 downloads

Image of Emy's default SD card. It contains some .lpc files and .phon files to get...

[Download](#)

# More LPC files :

<http://www.polaxis.be/lpc-files/>

[Forum](#)

## Manual

[Emy 2018 Manual](#)

[Emy 2019 Manual](#)

[Emy 2018 kit Assembly Manual](#)

[Emy 2019 V2 kit Assembly Manual](#)



[Emy 2018 quickstart manual](#) 569.91 KB 273211 downloads

Have a look at this little quick start manual to get started using the Emy 2018 speech...

[Download](#)



[Emy 2019 quick start manual](#) 3.78 MB 125827 downloads

Have a look at this little quick start manual to get started using the Emy 2019 speech...

[Download](#)

## Media

<https://www.youtube.com/embed/JkEYwAl6exk>