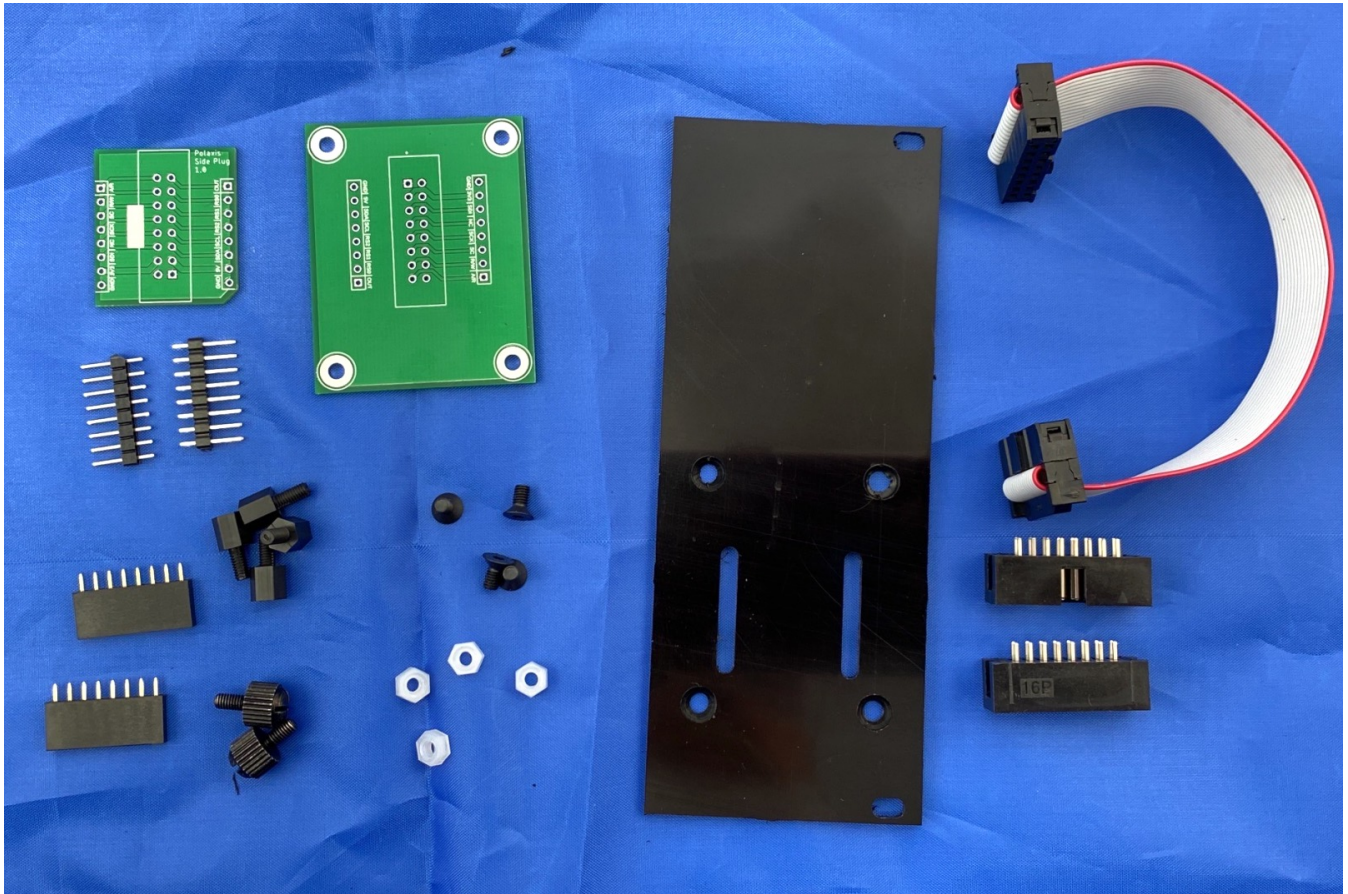


Kits contents



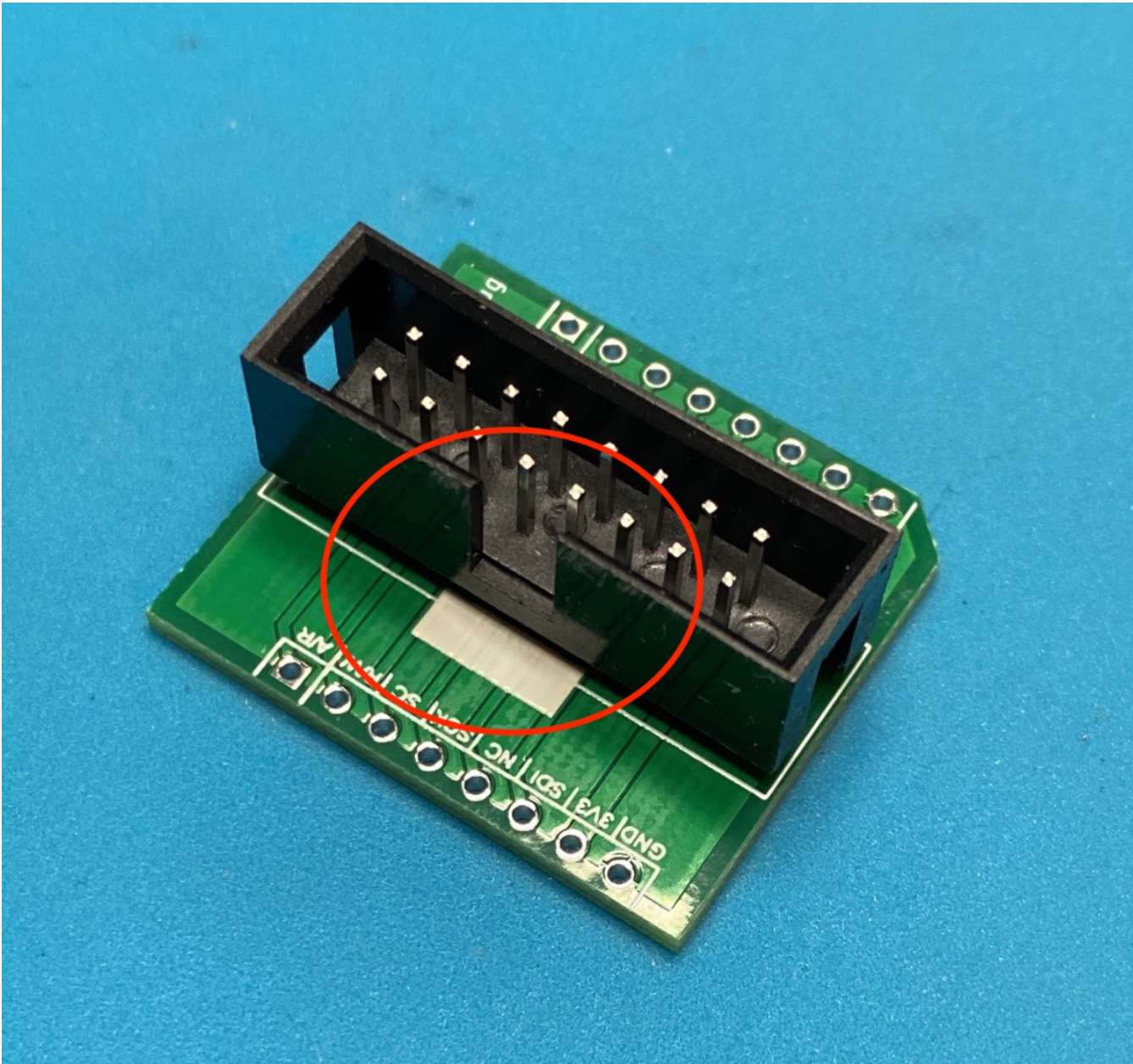
- 2 PCB: plug PCB and Board PCB
- 2 eights pins mâles headers
- 2 eights pins female sockets
- 2 16 pins shrouded connectors
- 4 6mm M3 hex spacer
- 4 M3 nylon nuts
- 4 M3X6 countersunk screws
- 15 cm flat cable with connectors
- One 3D printed or CNC'ed panel
- 2 M3 thumbscrews

PCB Soldering

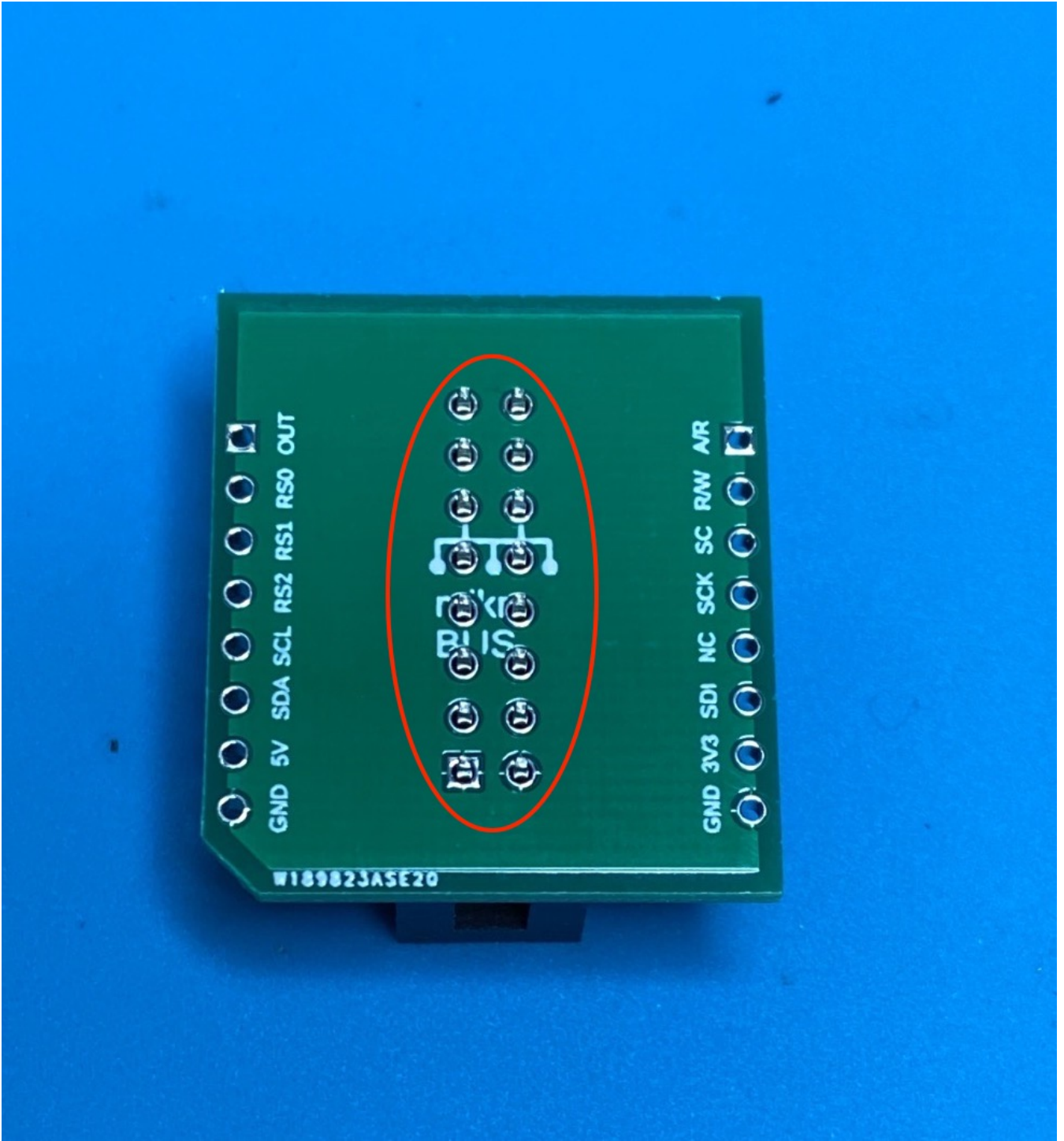
Place one shrouded 16 pins connector on the **Side Plug PCB**

Caution

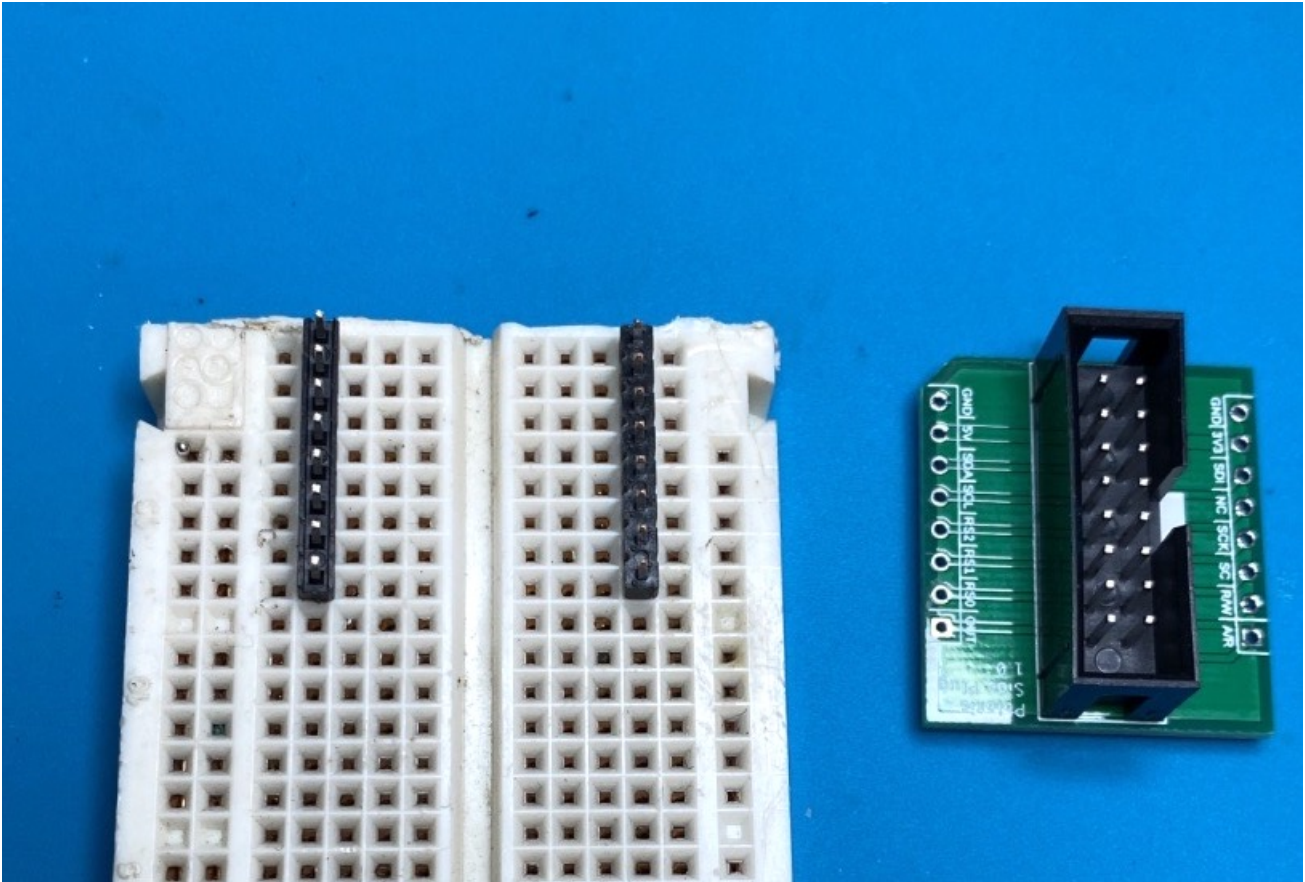
make sure to orient the connector with the white marking:



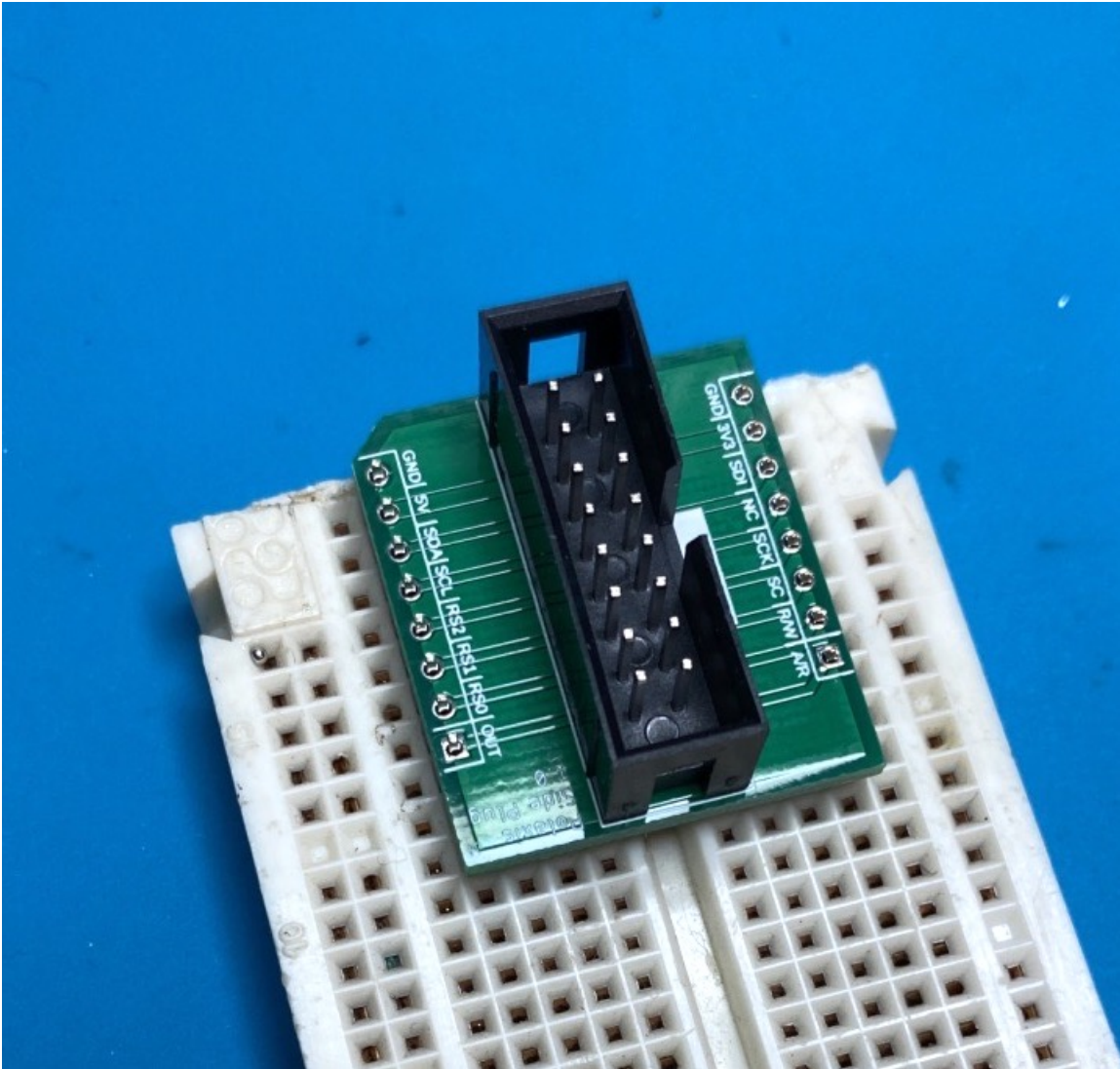
Flip the PCB and solder the shrouded connector in place



Prepare the two eight pins males headers (using a breadboard)



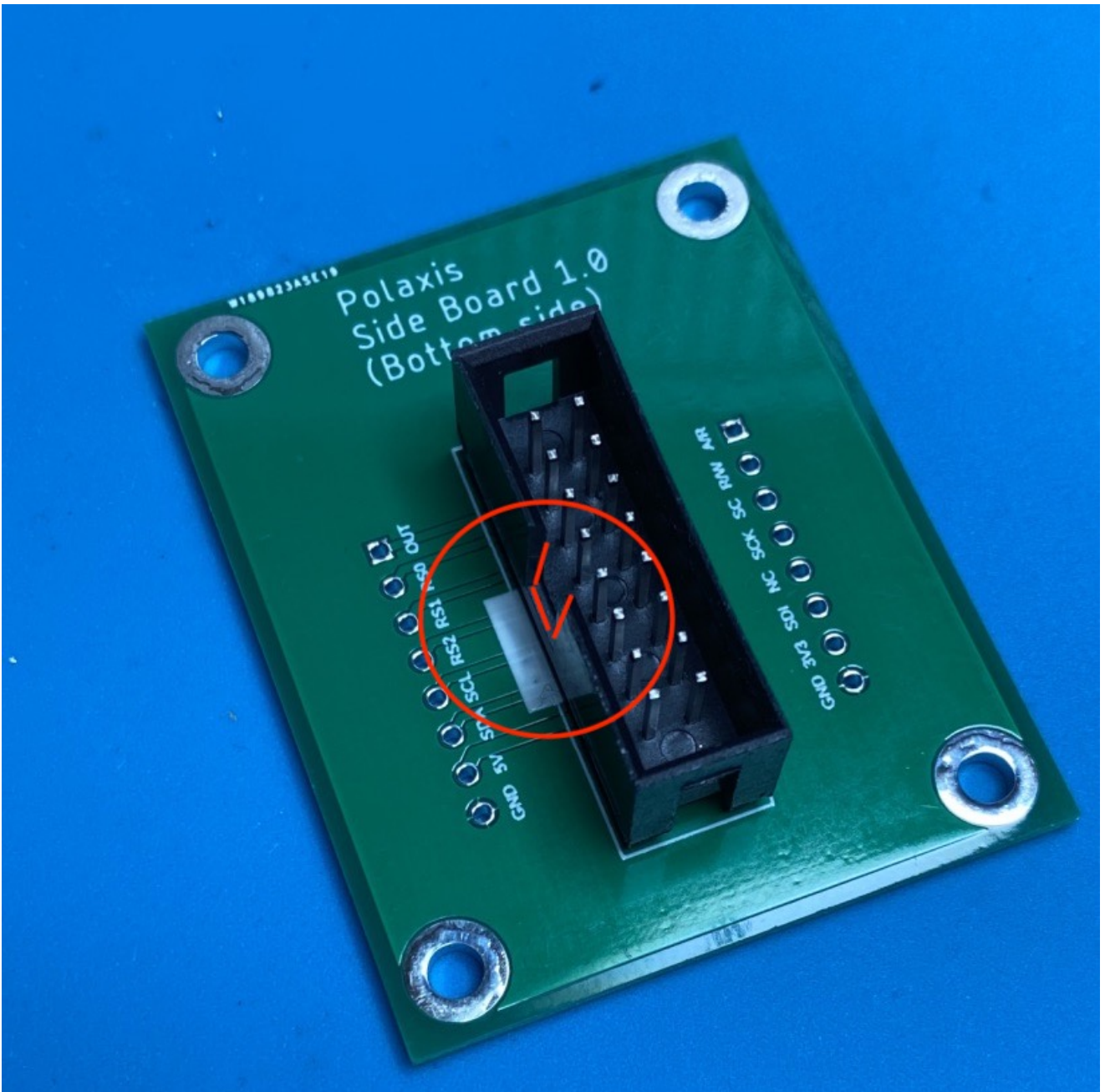
Solder the two eight pins males headers



Place the second shrouded 16 pins connector on the **Side Board** PCB.

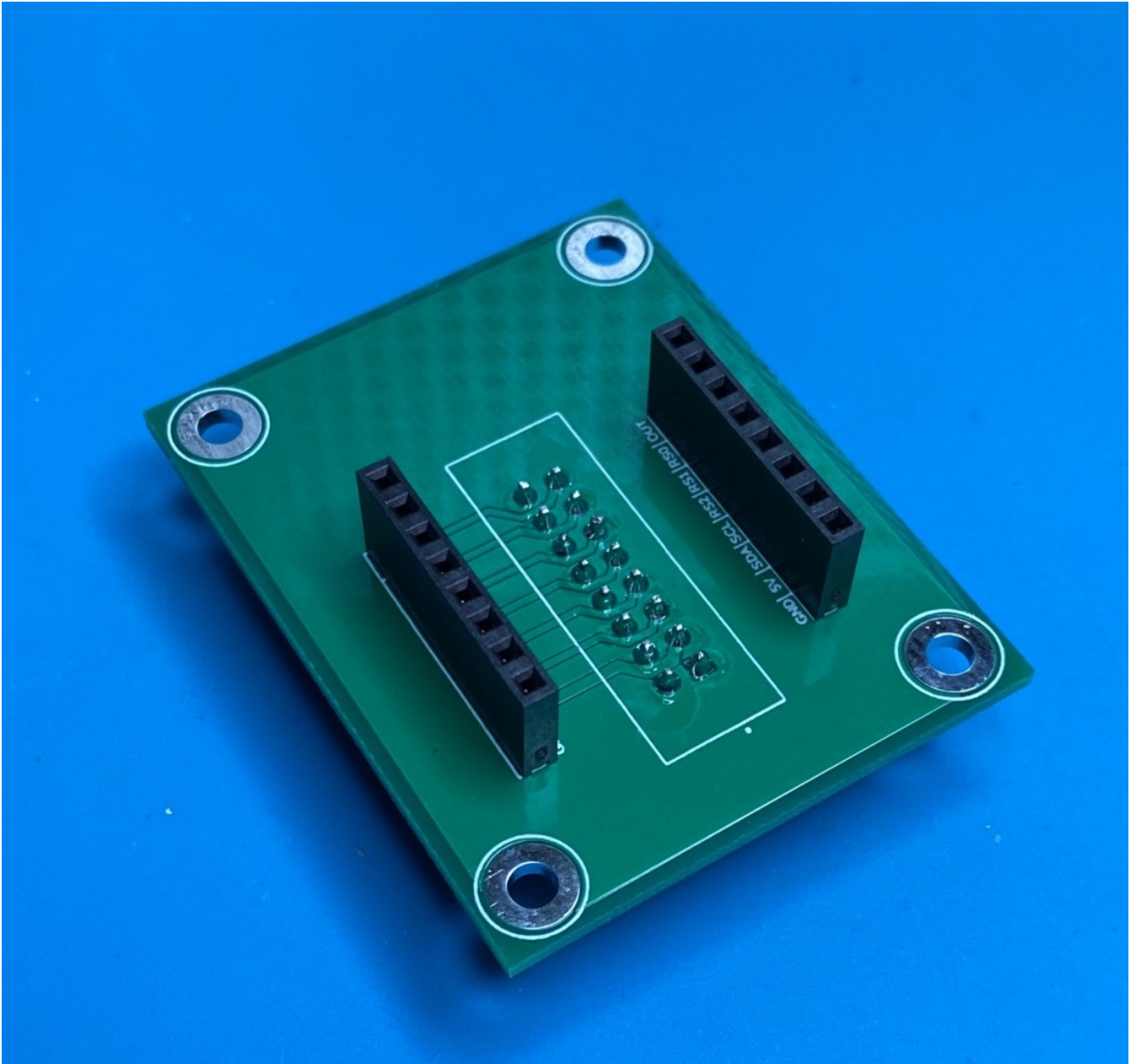
⚠ Caution

make sure to orient the connector with the white marking:



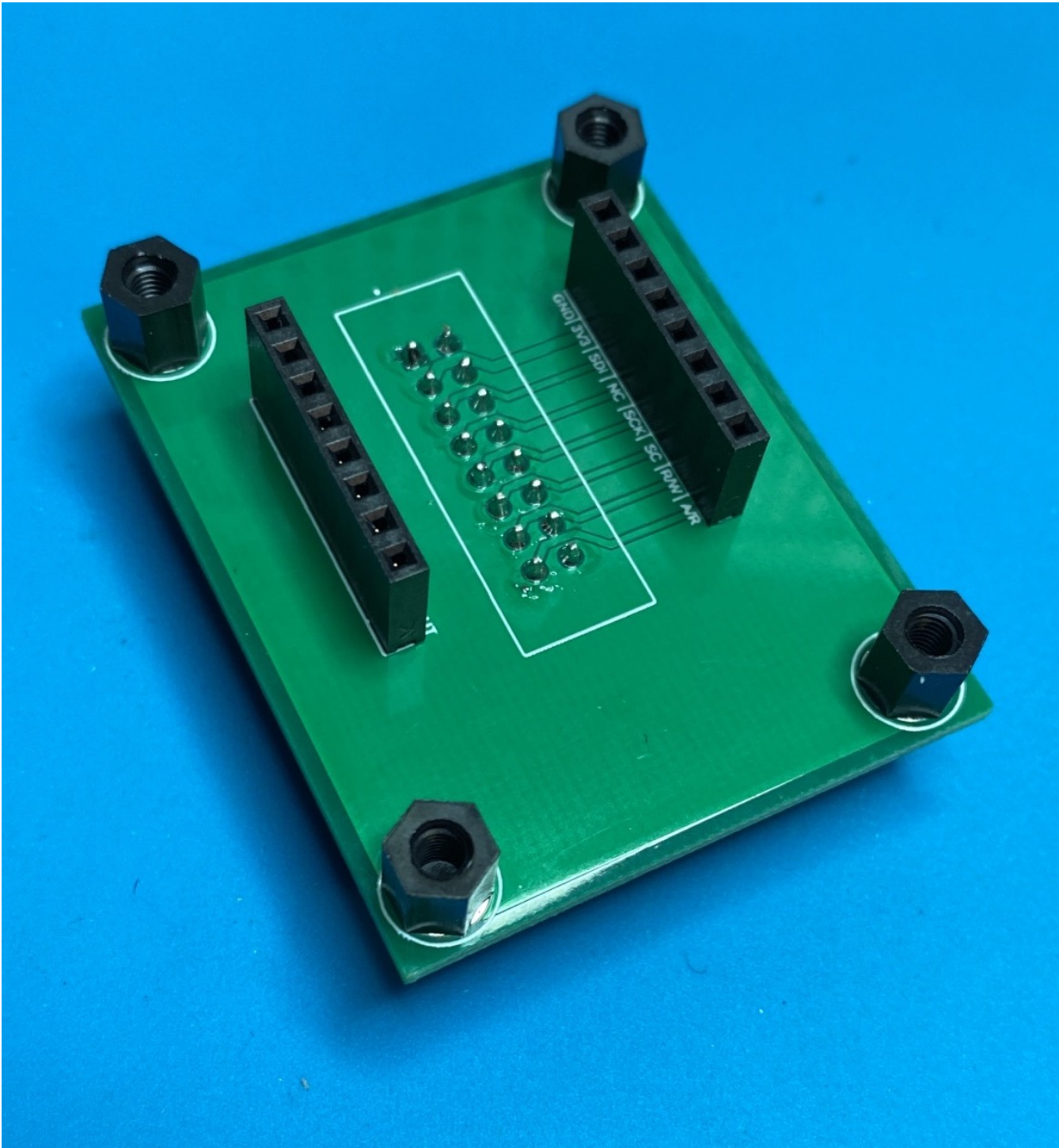
Flip the board and solder the pins

Add the eight pins female sockets on the opposite side and solder them.

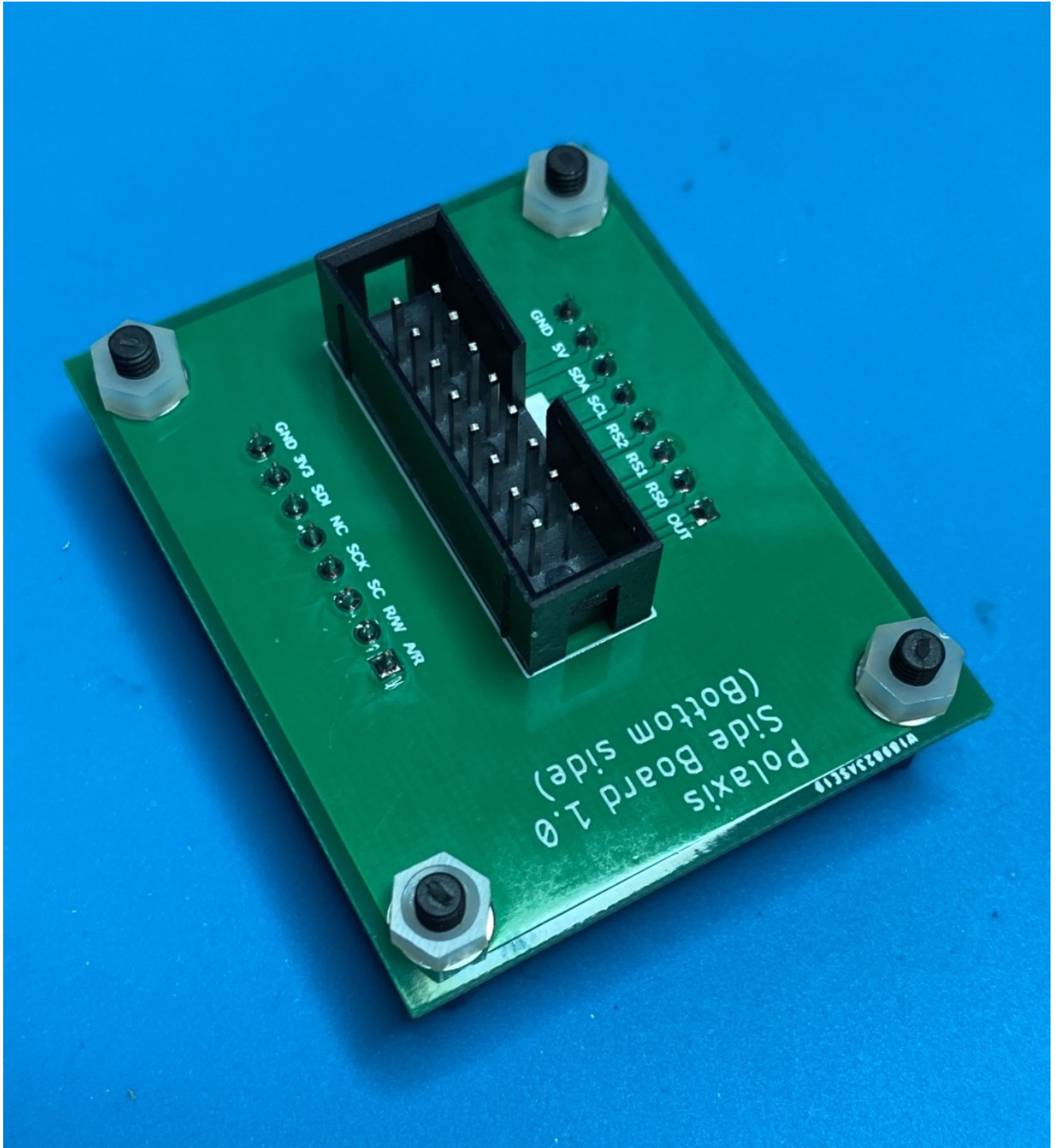


Assembly

Add the 4 spacers to the upperside



Hold the spacer in place using the 4 nylons white nuts



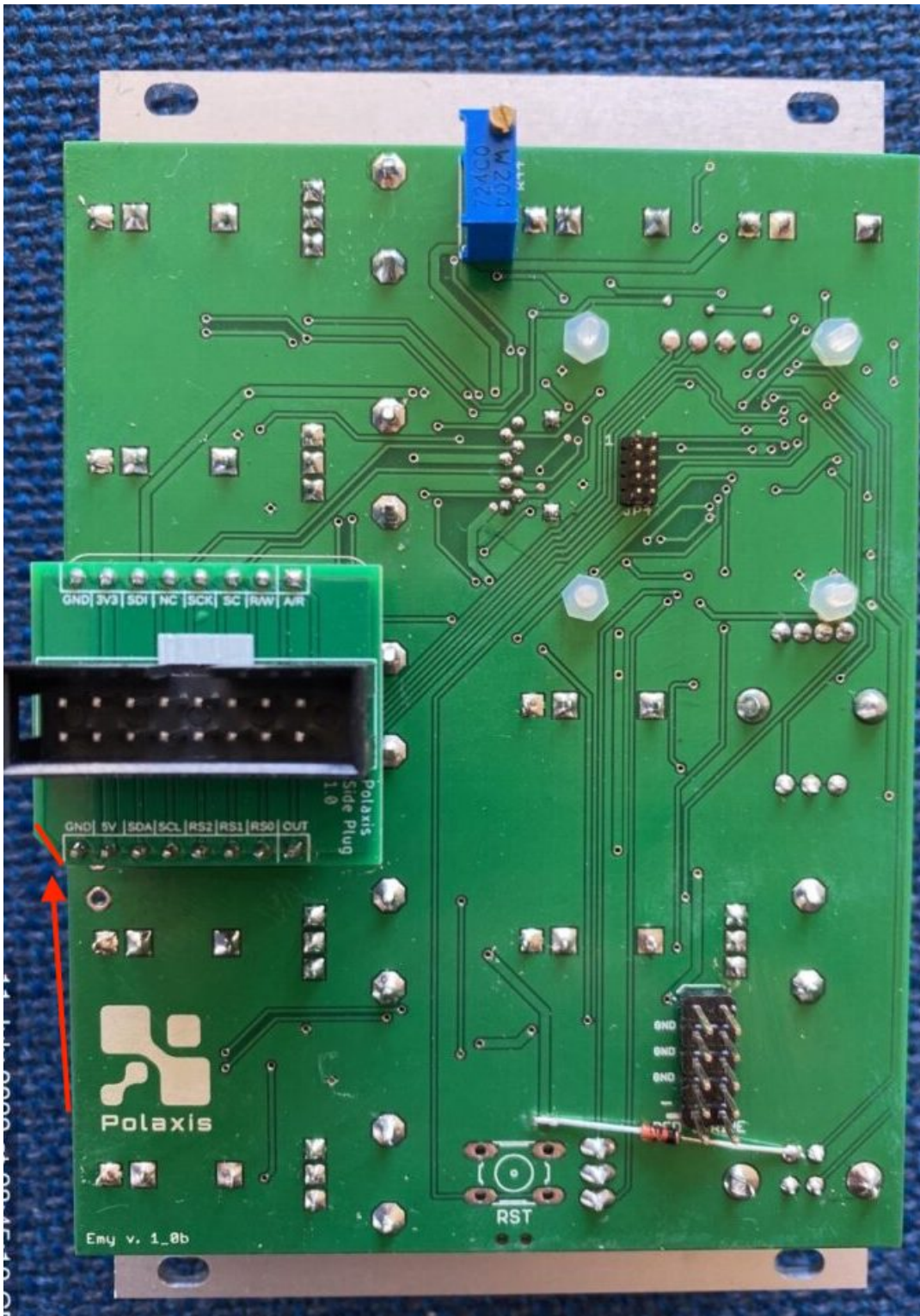
Screw the Side board to the panel using the 4 countersunk screws



Install the Side plug on Emy

⚠ Caution

make sure to orient the connector correctly



Use the cable to connect Emy & Polyglot

